

INCREASING THE COMPLETION RATE OF DIABETIC EYE EXAMS IN THE PRIMARY CARE SETTING

Teresa Groh, MPAS, PA-C



Clinical Director, MSJ PA Program

Primary Care PA-C, Walden Ponds South

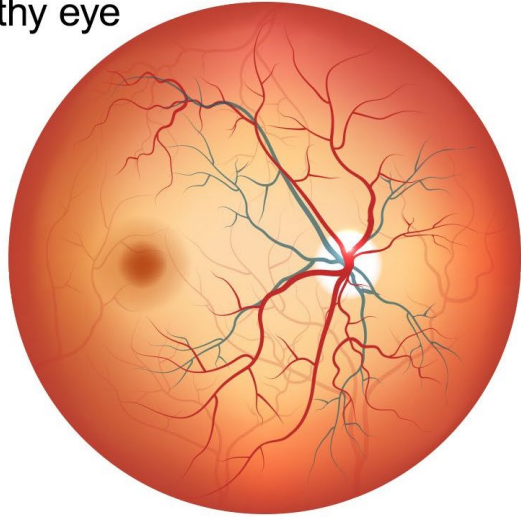
Fellow of Community Primary Care Champion Fellowship



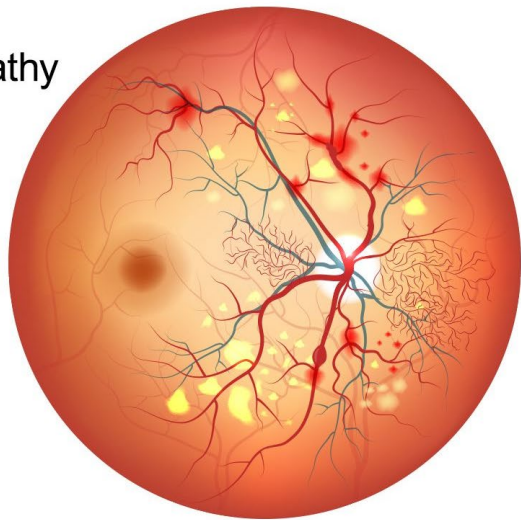
CPCC FELLOWSHIP

- All the resources!
 - Evening discussions
 - Connections
- 
- 

Healthy eye



Diabetic Retinopathy

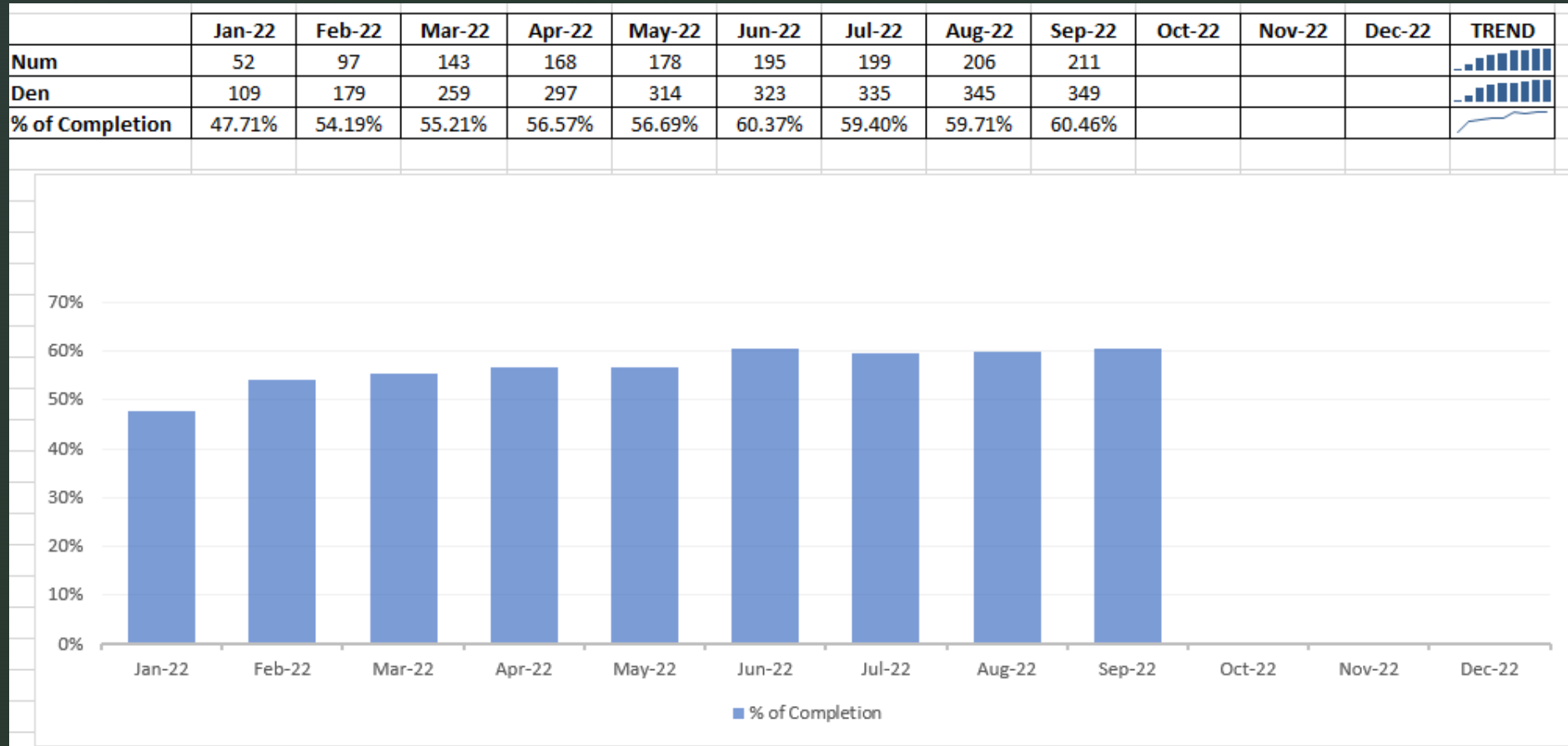


DIABETIC EYE EXAM

Why is this important?

BASELINE DATA

56.7% (average of data from January to September 2022)



OBJECTIVE

The objective of this project was to improve the diabetic eye exam completion rate among Type 1 and 2 diabetics ages 18-75 years from a baseline of **56.7%** (*average of data from January to September 2022*) to a goal of **75%** *by the end of the following 8-month period.*

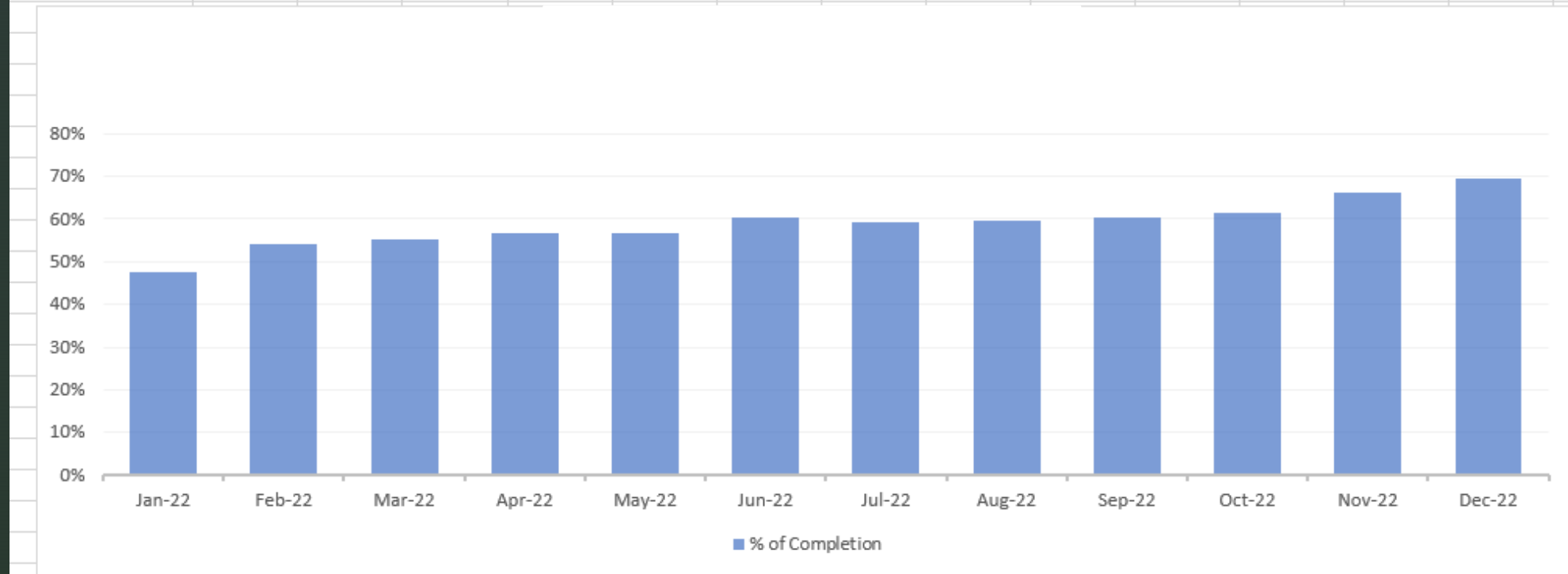
INTERVENTION #1

10/3/2022



LumineticsCore™
(formerly known as IDx-DR)

	Jan-22	Feb-22	Mar-22	Apr-22	May-22	Jun-22	Jul-22	Aug-22	Sep-22	Oct-22	Nov-22	Dec-22	TREND
Num	52	97	143	168	178	195	199	206	211	218	238	255	
Den	109	179	259	297	314	323	335	345	349	354	360	368	
% of Completion	47.71%	54.19%	55.21%	56.57%	56.69%	60.37%	59.40%	59.71%	60.46%	61.58%	66.11%	69.30%	



INTERVENTION #2

2/27/2023

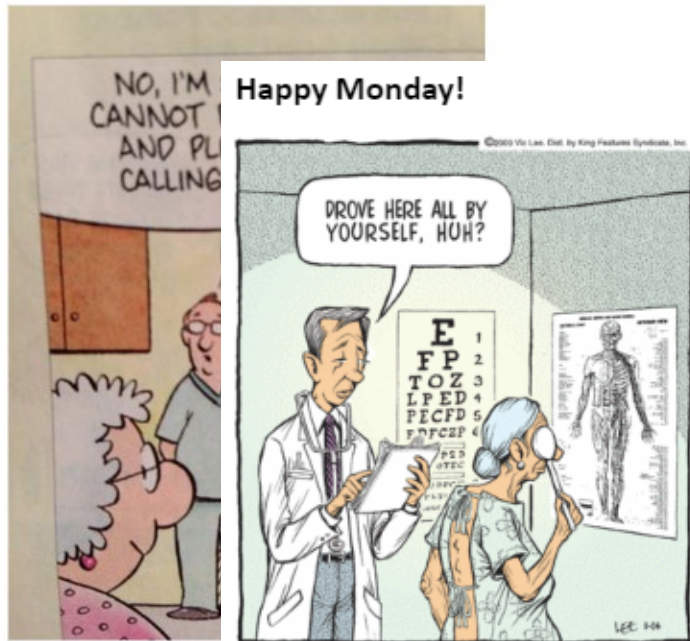
Hi everyone!

Update on our DM eye exam completions!

Our % of completion for **February** went up to **66.67%**! Up from 64.91% in January. Keep up the good work!

Keep an "eye" out for those

Credit: Kimberly Ellis 😊



Happy Monday!

Just a friendly reminder to catch those diabetic

- Have patients come in a little before their appointment or stay after their visit to complete their DM eye exam while they are here.
- Get their eye provider's information so we can obtain records of their last DM eye exam!

When your optometrist asks you which looks better... "1 or 2?"

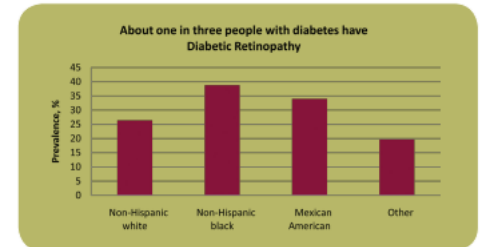


Diabetic Retinopathy

Diabetes is the leading cause of new cases of blindness in adults. This is a growing problem as the number of people living with diabetes increases, so does the number of people with impaired vision.

Diabetes can cause a disease of the eye called **diabetic retinopathy (DR)**. In its early stages, you may not notice any symptoms or changes to your eyesight, and you cannot tell that this condition is damaging your eyes. If it is not detected and treated in a timely manner, your vision can be damaged **permanently**.

A recent study, conducted at CDC, found that the prevalence of diabetic retinopathy was high, affecting almost one-third of adults over age 40 years with diabetes, and more than one-third of African-Americans and Mexican-Americans.



- 4.2 million adults had DR and 655,000 had vision-threatening DR.




The more severe, vision-threatening form of the disease was more than twice as common in Mexican Americans, and almost three times as common in African-Americans, than in the white population.

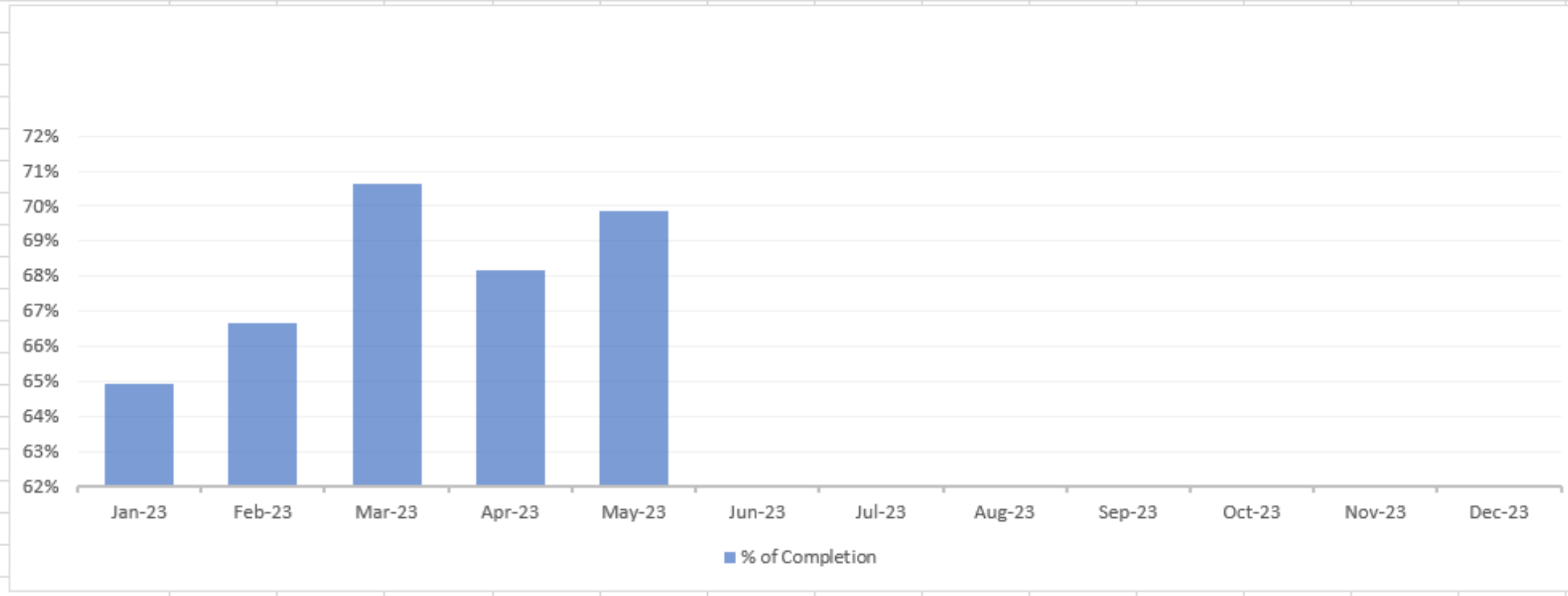
- Male sex, higher A1c level, longer duration of diabetes, insulin use, and higher systolic blood pressure were independently associated with the presence of DR.

Diabetes-related blindness costs the nation about \$ 500 million annually. Prevention is important. Vision problems and blindness caused by Diabetic Retinopathy may be prevented through:

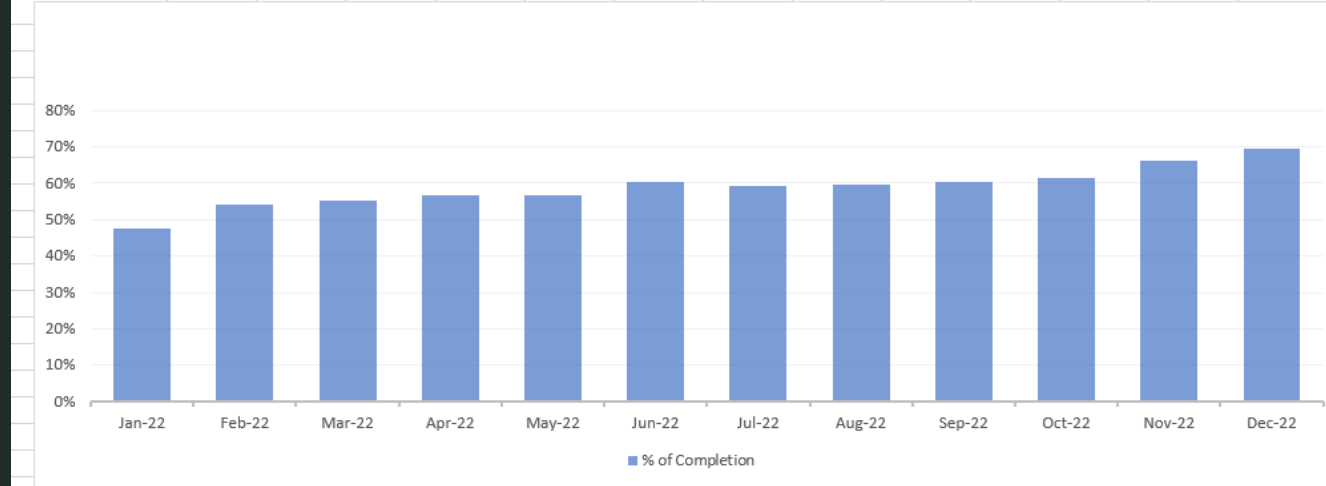
1. Good control of blood sugar and blood pressure levels, and
2. Early detection and treatment of eye diseases

The study used a cross-sectional, nationally representative sample of 1006 adults aged 40 years and older who had been diagnosed with diabetes. Subgroups included non-Hispanic whites, non-Hispanic blacks, and Mexican-Americans. It was conducted as part of the National Health and Nutrition Examination Survey from 2005 to 2008. The full report can be found in [The Journal of the American Medical Association](#).

	Jan-23	Feb-23	Mar-23	Apr-23	May-23	Jun-23	Jul-23	Aug-23	Sep-23	Oct-23	Nov-23	Dec-23	TREND
Num	74	126	178	195	220								
Den	114	189	252	286	315								
% of Completion	64.91%	66.67%	70.63%	68.18%	69.84%								



	Jan-22	Feb-22	Mar-22	Apr-22	May-22	Jun-22	Jul-22	Aug-22	Sep-22	Oct-22	Nov-22	Dec-22	TREND
Num	52	97	143	168	178	195	199	206	211	218	238	255	
Den	109	179	259	297	314	323	335	345	349	354	360	368	
% of Completion	47.71%	54.19%	55.21%	56.57%	56.69%	60.37%	59.40%	59.71%	60.46%	61.58%	66.11%	69.30%	



LumineticsCore™
(formerly known as IDx-DR)

WEEKLY E-MAILS

67.2%

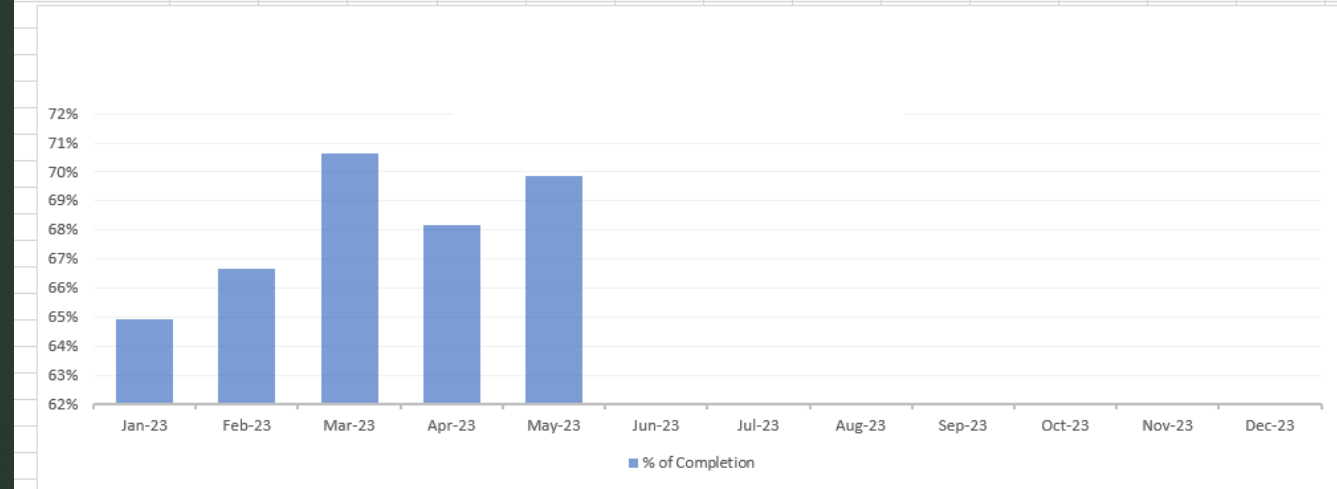
(average of date from October 2022- May 2023)

BASELINE DATA

56.7%

(average of data from January to September 2022)

	Jan-23	Feb-23	Mar-23	Apr-23	May-23	Jun-23	Jul-23	Aug-23	Sep-23	Oct-23	Nov-23	Dec-23	TREND
Num	74	126	178	195	220								
Den	114	189	252	286	315								
% of Completion	64.91%	66.67%	70.63%	68.18%	69.84%								



FURTHER INTERVENTIONS?



DIABETIC EYE CARE

EASIER THAN EVER!



"Early detection and treatment of diabetic retinopathy is critical to preventing blindness." - Dr Dennis Anthony, KHMG Newsletter November 30th, 2022



Diabetic retinopathy is the **#1 CAUSE OF PREVENTABLE BLINDNESS** in working-age adults



24,000

Number of individuals in the U.S. that go **BLIND** annually from diabetic retinopathy



Number of Americans with **DIABETES** by 2030



Over **85%** of individuals with diabetes will develop **DIABETIC RETINOPATHY** within 20 years

Scheduling Is Easy!

Stop and schedule your exam when Checking Out of your appointment today!

Or, call our office phone number, 513-893-1100 and select option "1" for scheduling.

Feel free to ask any questions during your visit, or you can always send a message to your provider on MyChart!



QUESTIONS?

